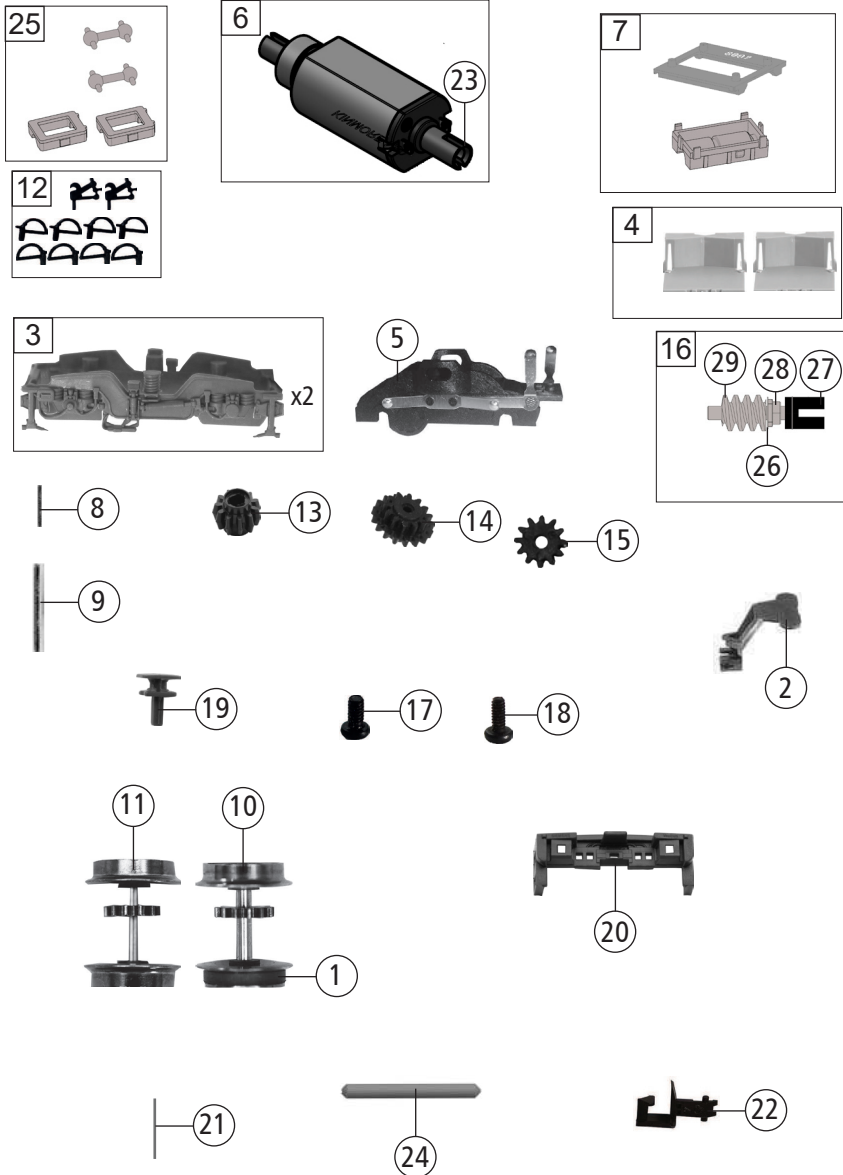


Pos. Nr. Pos.no.	Beschreibung Description	Art.-Nr. Art.no.	Preisgruppe Price bracket
739308	GYSEV VECTRON		N
739378			N
1	LOKGEHÄUSE O.P. BETR.NR. 0471 502-9 Body ass. w/o panto loco no 0471 502-9	10739308	37
2	FÜHRERSTAND/SATZ Driver's cab /set	12739305	19
3	LICHTMASKE Light mask	12739302	6
4	TS-FENSTER+LICHTLEITER Part set-Window+light conductor	13739308	11
5	UMSCHALT.-VERTEILER-FLANSCH /SATZ Switch-distributor flange /set	19739302	12
6	TS-ISOLATOREN Part set-Isolators	19739304	12
7	SIGNALHORN Signal horn	19766300	11
8	TS - DACHLEITUNG Part set - Roof wiring	19771800	11
9	TS-ANTENNEN Part set-Antennas	19771700	6
10	TRITT Treadle	19771600	6
11	TS-SCHIENENRÄUMER Part set-Railguard	22739305	12
12	TRAFOWANNE Transformer tub	33739308	9
13	GRUNDRAHMEN Basic frame	144457	19
14	BRÜCKENSTECKER Jumper	66710800	18
15	PLATINE KPL. OBEN Upper PCB complete	144653	20
16	LED-PLATINE LICHTWECHSEL LED-PCB with light alternation	65723700	25
17	EINHOLMSTROMABN. M. LANGEM SCH. Single arm panto. w. long contact shoe	67703800	22
18	EINHOLMSTROMABN. M. KURZEM SCH. Single arm panto w. short contact shoe	67703900	21
19	EINHOLMSTROMABN. M. KURZ. SCH. Single arm panto. w short contact shoe	67708700	21
20	TS-LAMPENEINSÄTZE Part set-Lamps	146171	10
Sound			
21	LAUTSPRECHER Loudspeaker	68701100	16
22	SOUNDDECODER Sound decoder	68739348	40



Pos. Nr. Pos.no.	Beschreibung Description	Art.-Nr. Art.no.	Preisgruppe Price bracket
739308	GYSEV VECTRON		N
739378			N
1	HAFTREIFEN Traction tyre	00547002	1
2	KUKU-DEICHSEL Short coupling reception	00387006	5
3	DREHGESTELLRAHMEN /SATZ Bogie framework /set	41739305	7
4	DEICHSELABDECKUNG /SATZ Shaft cover plate /set	43724501	9
5	DREHGESTELLBLOCK KPL. Bogie block complete	144842	18
6	MOTOR KPL. Motor complete	144448	28
7	TS - MOTORDISTANZPLATTE, LS-BOX Part set - Motor spacer, loudspeaker box	144468	6
8	ACHSE Axle	00527009	1
9	ACHSE F. DREHGESTELLBEFESTIGUNG Bogie fixation pin	00527010	1
10	RADSATZ KPL.M.Z.M.1H. Wheelset comp. w. gearwheel w. tr. tyre	144465	12
11	RADSATZ KPL.M.Z.O.H. Wheelset comp. w.gearwh. w/o TR. tyre	144466	11
12	ZUGHAKEN-BREMSKUPPLUNG/SATZ Coupling hook, break coupling /set	19733001	12
13	ZAHNRAD Z=11 Gear wheel	56716100	3
14	UNTERSETZUNGSRAD Z=12/17 Reduction gear wheel	56718500	4
15	ZAHNRAD Z=12 Gear wheel	144460	5
16	SCHNECKENSATZ MIT KARDANSCHALE Worm gear w. cardan reception	144469	14
17	LINSENSCHRAUBE M 1,2x3 mm Button screw	70900005	2
18	SK - SCHRAUBE M 1,6x4 mm SK - Screw	115161	3
19	PUFFER Buffer	75715900	5
20	PUFFERBOHLE Buffer beam	75739308	5
21	RICHTFEDER F.DEICHSEL L=15mm Straightening spring f. drawbar L=15mm	00767008	1
22	KUPPLUNG N-SPUR Coupling	98189	6
23	KARDANSCHALE F. MOTOR Cardan reception for motor	146174	3
24	ACHSE Axle	144459	4
25	KARDANWELLE + SCHNECKENDECKEL Cardan shaft + worm gear cover	144467	6
26	SCHNECKE D = 4MM L = 5MM Worm gear	00567601	7
27	KARDANSCHALE F. SCHNECKENSATZ Cardan reception for wormgear set	145585	3
28	ACHSLAGER Axle bearing	145530	6
29	BEILAGSCHEIBE Washer	145804	4